

Country Report: Martinique

Lionel Reynal, Katia Frangoudes*, Clément Dromer

Ifremer, UBO, Impact Mer



1. Outline of FAD fisheries

- 1982: FAD first experiences started in East coast
- FAD were deployed in 300-500 depth
- 1988: IFREMER initiated a project on FAD's
- In 1990ies FAD development is generalised '

Current situation

- FAD's development is more important in the Western part of the island
- Public FAD are deployed between 10-20 NM:
- Private are situated in deeper waters

Fishing fleet

- 303 undocked boats operate around FAD's (outboard engines)
- 76 are more specialising in FAD's
- Undocked boats/ no authorise further to 5 NM
- Decked boats authorise further to 20 NM
- Both operated often further

Landings are composed

- Blue Marlin 35 to 44%
- Yellow tuna 15 to 31%
- Bonitos 16 to 21%
- Dolphin 4 to 6 %
- Black fin tuna 3-5%

Each Fishing trip: 55 to 84kg average

With a total Annual landings: 400 tons

Landings points:

99 with refrigeration equipment

Fish is sold at local level and prices

- 8-10 € for blue marlin
- 10 € for yellow fin tuna and black tuna

Data collection

- IFREMER: Fisheries Information System (2009)
- 2 methods to collect information :
- Telephone (75 interviews/week)
- Sampling at landing places (10 boats/5 working days)

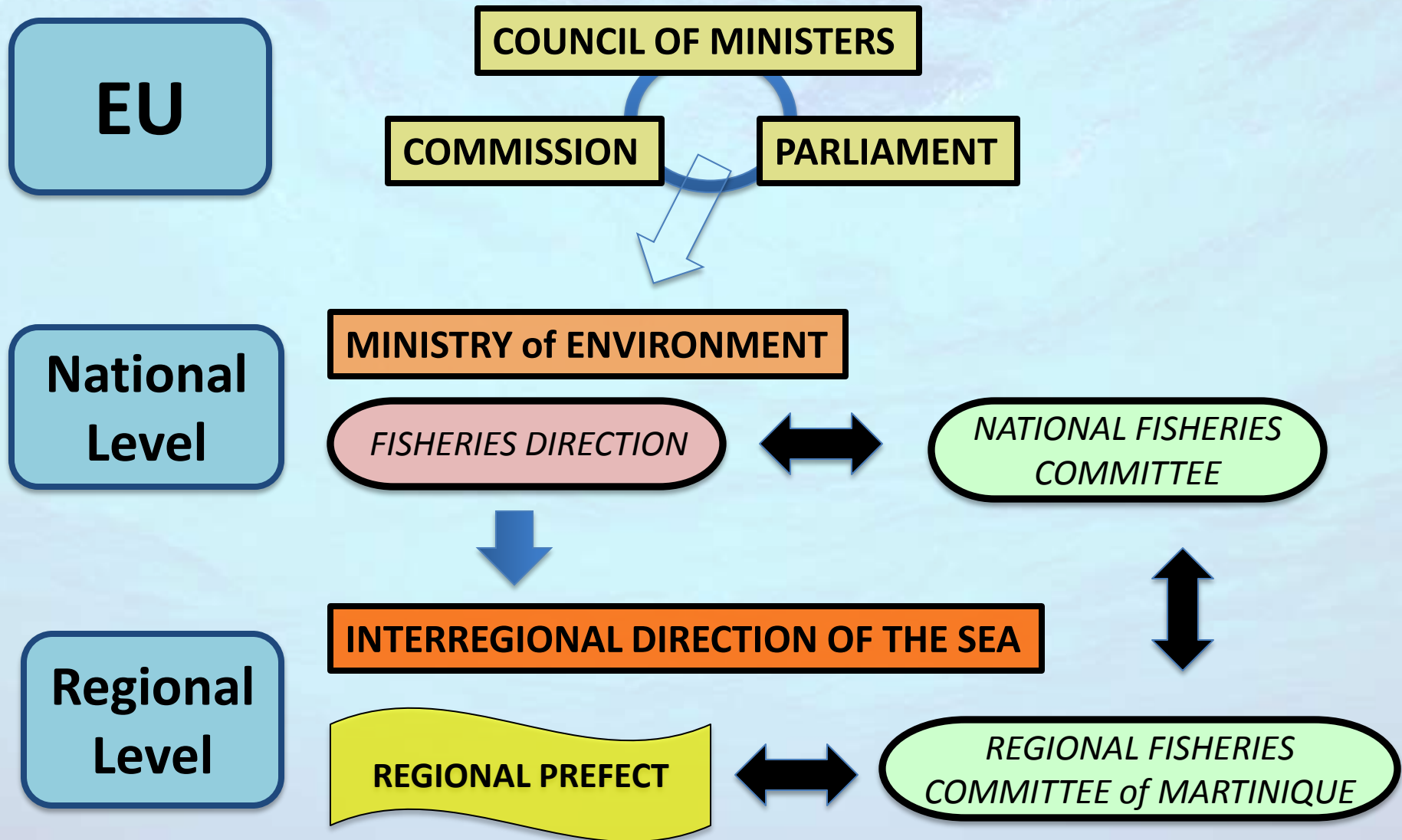
Registration and licenses

- Fishing boats are in possession of fishing license, security certificate, etc
- Fisher is declared at the social security system of fishers
- Different administrations are in charge of licence deliverance : Direction of the Sea, Customs, etc...

Be fisher means ACCESS to

- Fisheries resources, training,
- Social insurance (health, retire pension, others
- Elect fishers representatives, etc...

DECISION MAKING PROCESS AT European Union / CFP



REGIONAL FISHERIES COMMITTEE of MARTINIQUE

COUNCIL

*Elected for 5 years by
Fishers, Crew, First Sale*

BOARD
Chair
4 vices chairs

Working groups

- Conservation and management of resources
- Harbours infrastructures
- Training / Social aspects
- Communication
- Market

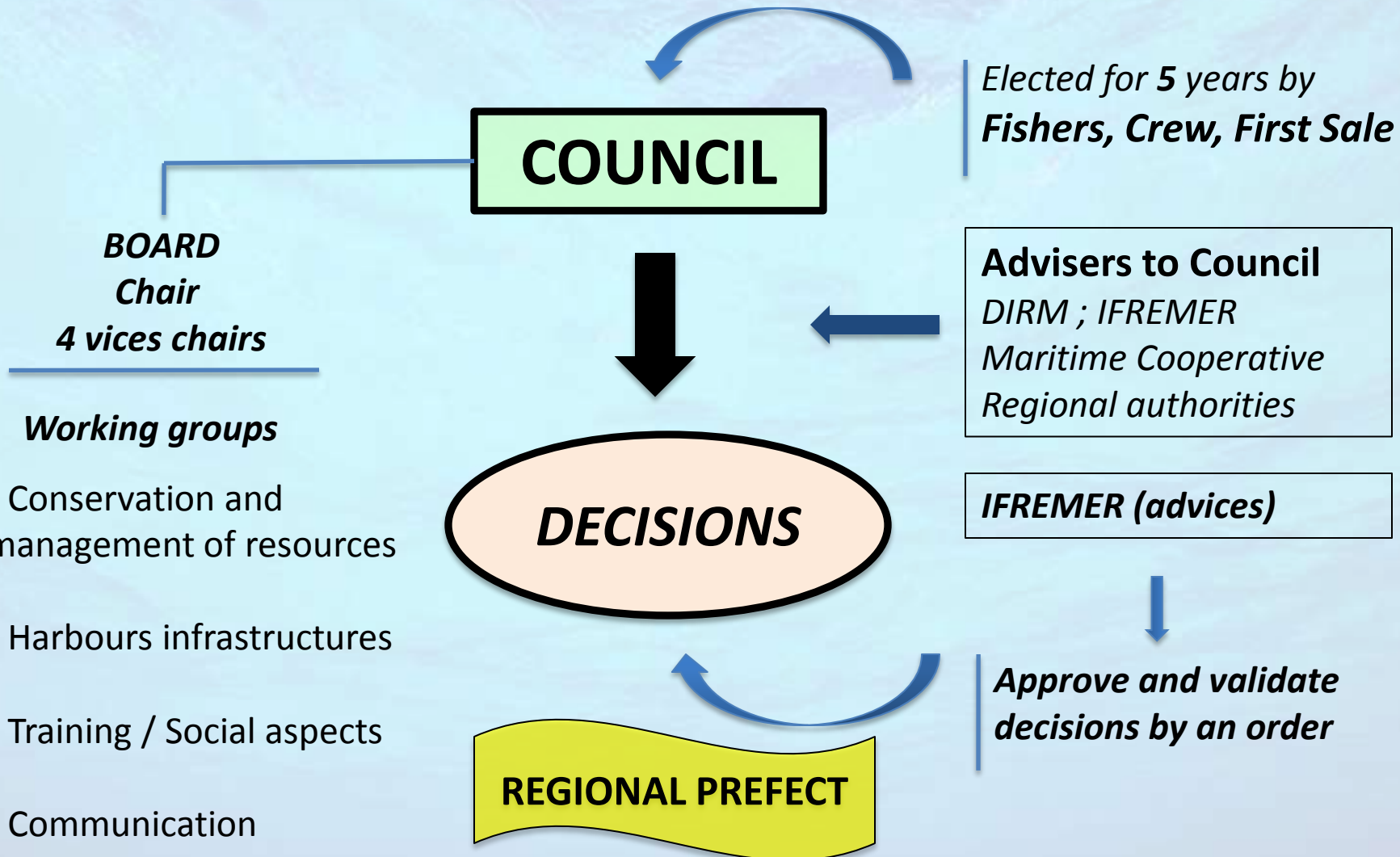
Advisers to Council
*DIRM ; IFREMER
Maritime Cooperative
Regional authorities*

IFREMER (advices)

*Approve and validate
decisions by an order*

DECISIONS

REGIONAL PREFECT



Martinique: Rules and regulations for FAD Fisheries Management / CRPM

- 1996: CRPM regulate FAD deployment and access
- Authorisation for Temporary Occupation of the Sea
- Access Limited to fishers / licence
- Fees for the licence / maintenance of FAD
- Authorise fishing gears (Surface or subsurface trawling line, drifting vertical line)
- Decision was validated by the Prefect / Order n° 962941 of 30/12/1996